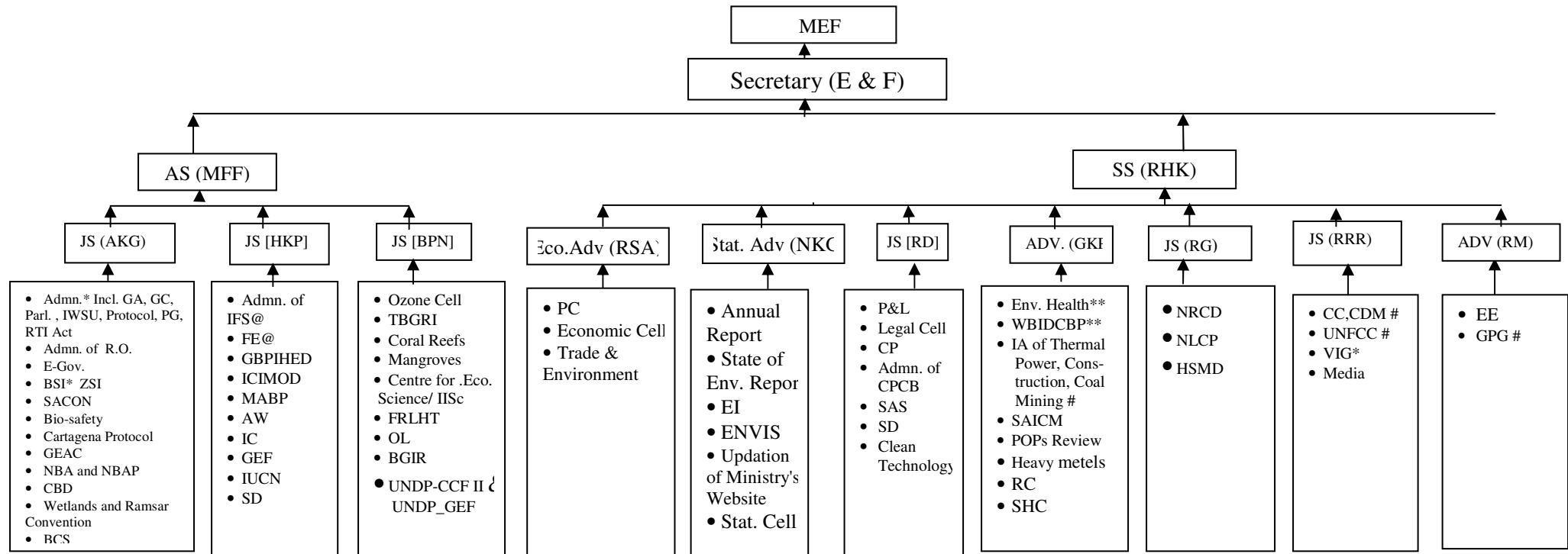


ORGANISATIONAL STRUCTURE OF THE MINISTRY OF ENVIRONMENT AND FORESTS (ENVIRONMENT WING)

CHART- I
(As on 15th January, 2010)



* This work will directly be submitted to the Secretary (E&F)

**Officers for this work will report to SS (RHK)

@ JS (HKP) will report to DGF & SS for this work.

Officers for this work will report to AS(JMM)

AW: Animal welfare

BGIR: Botanical Garden of the Indian Republic

BG: Botanic Garden

BSI: Botanical Survey of India

BCS: Bio-Diversity Conservation Scheme.

CC: Climate Change

CDM: Clean Development Mechanism

CP: Control of Pollution

CRZ: Coastal regulation Zone

CPCB:Central Pollution Control Board

CBP: Capacity Building Project

CBD: Convention on Biological Diversity

EE:Environment Education

EIVR: Entities of Incomparable Value Regulations

FE: Forest Establishment

FRLHT:Foundation for Revitalization of Local Health Traditions

GBPIHED:G.B. Pant Himalayan Institute of Environment -

Development

GPG: Global Public Goods

GEAC: Genetic Engineering Approval Committee

GC: General Co-ordination

GEF: Global Environment Facility

GA: General Administration

HSMD: Hazardous Substances Management Scheme.

IGPP: Indira Gandhi Paryavaran Puraskar

IA: Impact Assessment

IC: International Co-operation

ICIMOD: International Centre for Integrated Mountain

-Development

IWSU: Internal Work Study Unit

MABP: Man and Biosphere Programme

MD: Male Declaration

NBAP: National Biodiversity Action Plan

NBA: National Biodiversity Authority

NATCOM: National Communication

NRCD: National River Conservation Scheme

NLCP: National Lake Conservation Plan

OL: Official Language

PG: Public Grievances

PC: Plan Co-ordination

P&L: Policy and Law

POPs: Persistent Organic Pollutants

RC: Rotterdam Convention.

SACON: Salim Ali Centre for Ornithology &

Natural History

SAICM: Strategic Approach to International

Chemicals

Management

SAS: Source Apportionment Studies

SD: Sustainable Development

UNFCCC: United Nations Framework

Convention on Climate Change

UNCCD: United Nations Convention to Combat

Desertification

VIG: Vigilance

WBIDCBP: World Bank Industrial Development

Capacity Building Project

ZSI: Zoological Survey of India

SS(RHK): R.H. Khwaja, Spl. Secretary

AS (MFF): M.F. Farooqui

JS (BPN): B.P. Nilaratna, Joint Secretary

JS (HKP): H.K. Pande, Joint Secretary

JS (AKG): A.K. Goyal, Joint Secretary

Eco. Adv (RSA): R.S. Ahlawat, Economic Adviser

Stat. Adv (NKG): Nil Kanth Gosh, Statistical Adviser

JS (RD): Rajneesh Dube, Joint Secretary

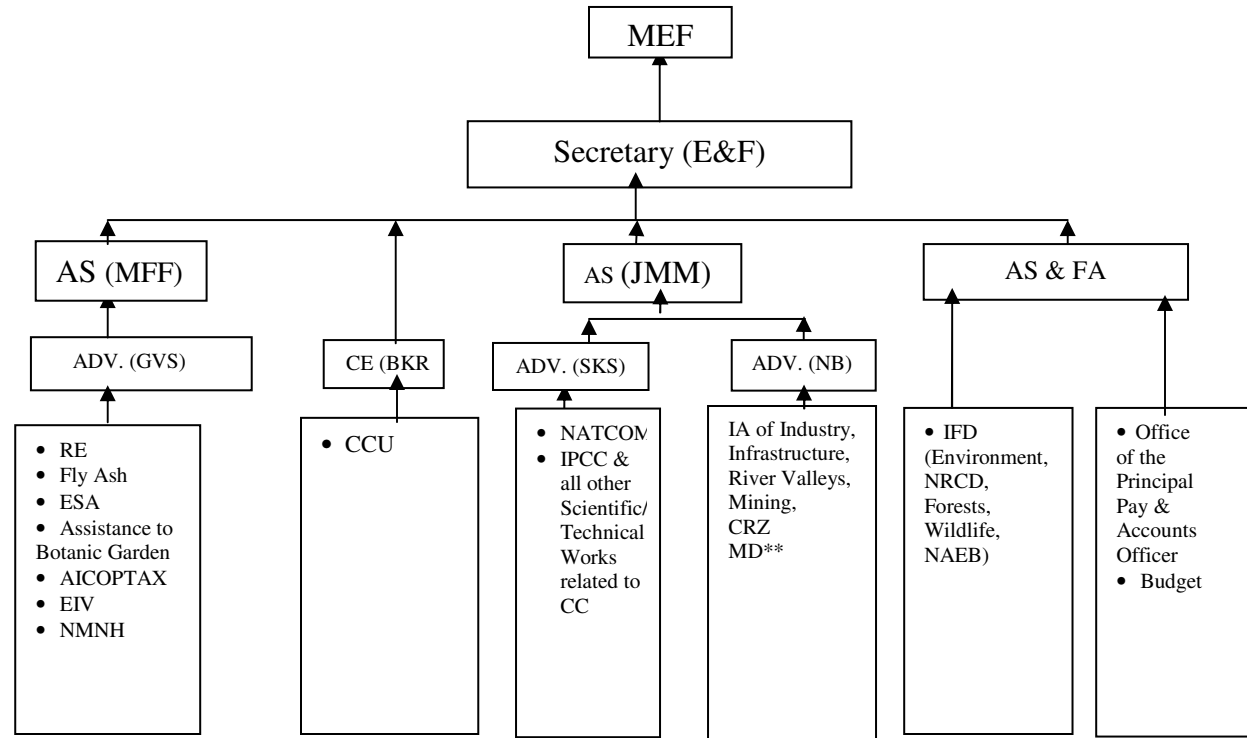
Adv (GKP): G.K. Pande, Adviser

Adv (RM): R. Mehta, Adviser

JS (RG): R. Gauba, Joint Secretary

JS (RRR): R.R. Rashmi, Joint Secretary

ORGANISATIONAL STRUCTURE OF THE MINISTRY OF ENVIRONMENT AND FORESTS (ENVIRONMENT WING)



** Officers for this work will report to SS (RHK)

AICOPTAX: All India Coordinated Project on Building in Taxonomy

CRZ: Coastal Regulation Zone

CCU: Civil Construction Unit

EIV: Entities of Incomparable Value

ESA: Ecologically Sensitive Areas

IA: Impact Assessment

IFD: Integrated Finance Division

SWM: Solid Wastes Management

NDMA: National Disaster Management Authority

NMNH: National Museum of Natural History

NAEB: National Afforestation and Eco-Development Board

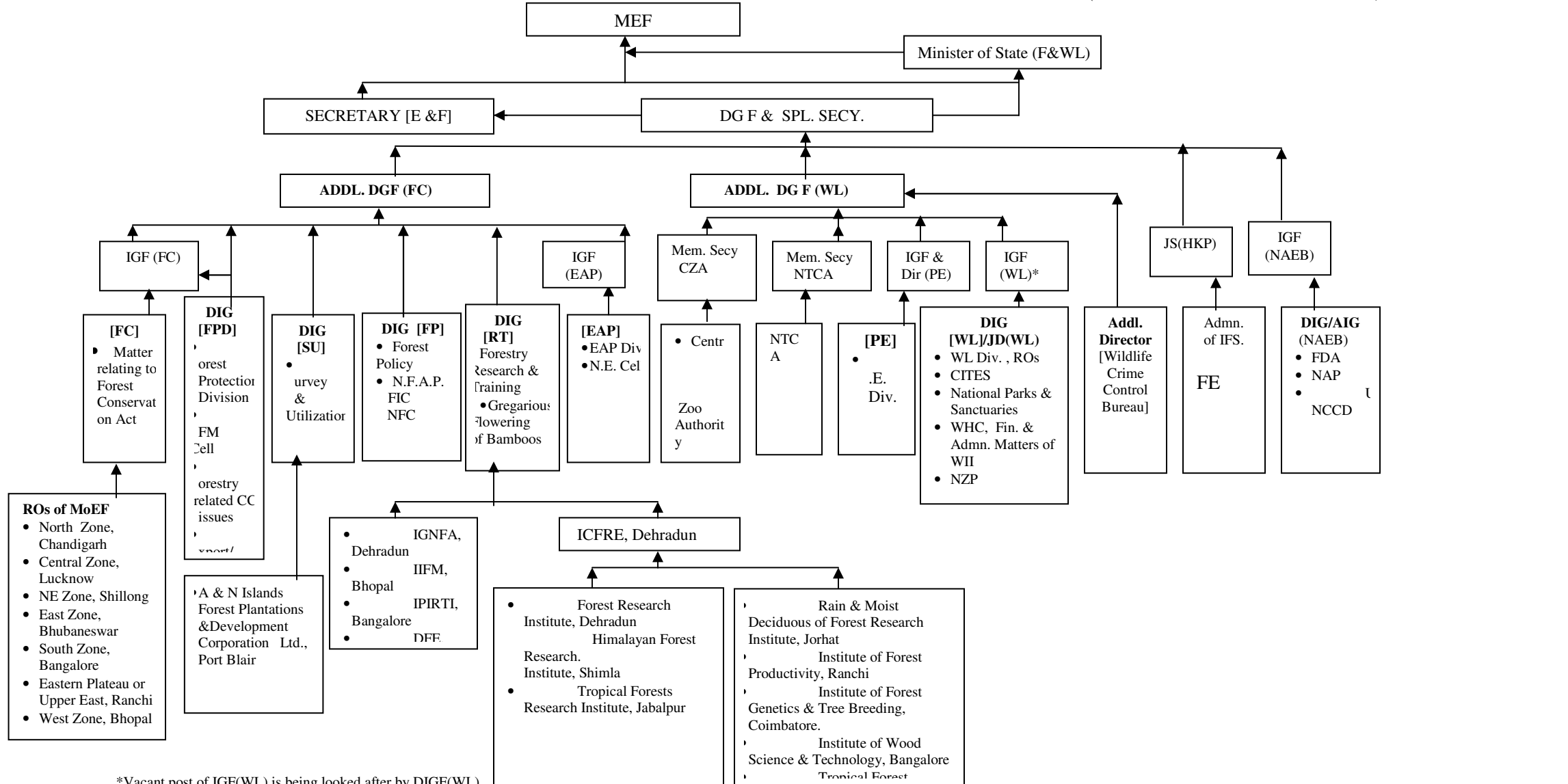
PLI: Public Liability Insurance

RE: Research in Environment

AS (MFF): M.F. Farooqui, Addl. Secretary
 AS(JMM):J.M. Mauskar, Addl. Secretary
 Adv (GVS): G.V. Subramaniam, Adviser
 CE (BKR): B.K. Rokde, Chief Engineer
 AS&FA: Additional Secretary and Financial Adviser
 ADV.(NB): Nalini Bhat, Adviser
 ADV.(SKS):Subodh k. Sharma, Adviser

(CHART -III)
(As on 15th January, 2010)

ORGANISATIONAL STRUCTURE OF THE MINISTRY OF ENVIRONMENT AND FORESTS (FORESTS AND WILDLIFE WING)



*Vacant post of IGF(WL) is being looked after by DIGF(WL)

CITES: Convention on International Trade on Endangered Species
DFE: Directorate of Forest Education
EAP: Externally Aided Projects
FC: Forest Conservation
FPD: Forest Protection Division
FP: Forest Policy

FIC: Forest International Cooperation
FSI: Forests Survey of India
IPIRTI: Indian Plywood Industries Research and Training Institute
IIFM: Indian Institute of Forest Management
IGNFA: Indira Gandhi National Forest Academy
JFM: Joint Forest Management

NFAP: National Forestry Action Programme
PE: Project Elephant
NZIP: National Zoological Park, New Delhi
NFC: National Forestry Commission
NAEB: National Afforestation & Eco-development Board
NTCA: National Tiger Project Authority

ROs: Regional Offices
RT: Research & Training
SU: Survey & Utilization
WHC: World Heritage Convention
WL: Wildlife

